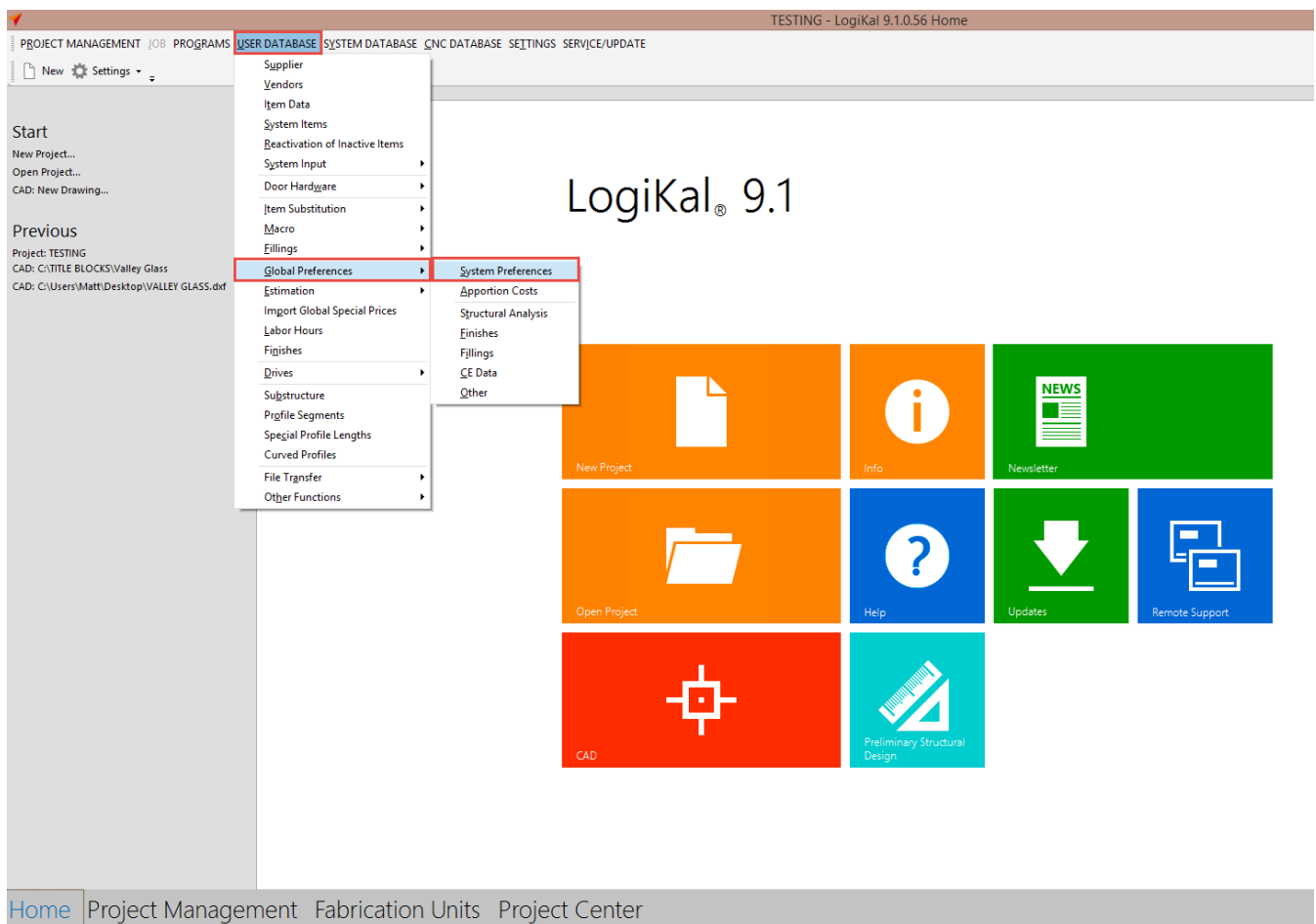


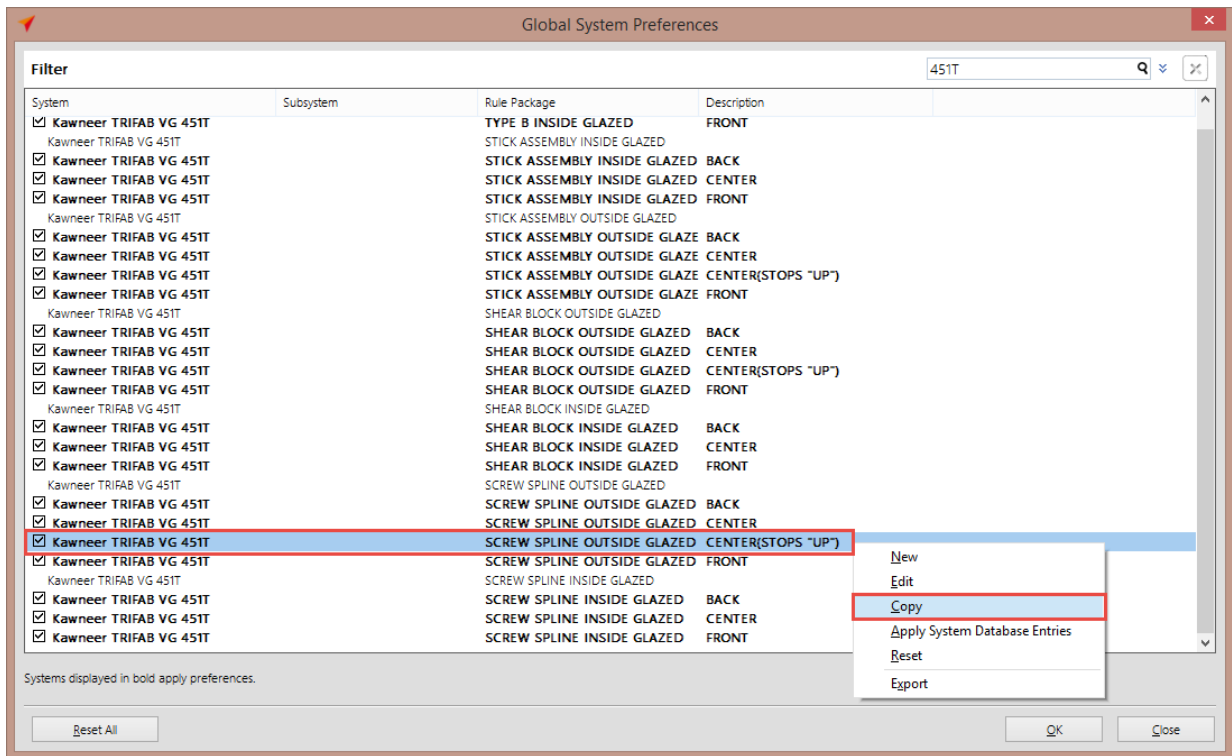
## Customizing System Preferences:

Logikal is programmed to automatically set profiles per the standards that are established in manufacturer's installation instructions (i.e. head, sill, verticals, and horizontal locations). At times it may be preferred or required to change these standards to better suit a company's preferences, or the specific construction type. This can easily be modified within the Logikal system to better suit the needs of the project, and also assist in streamlining the software to speed up the elevation entry process.

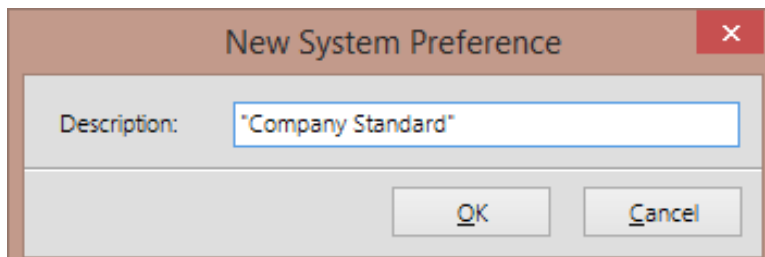
- 1.) From the overhead menu, please select "User Database." From the available drop down menu, find "Global Preferences" and then select "System Preferences."



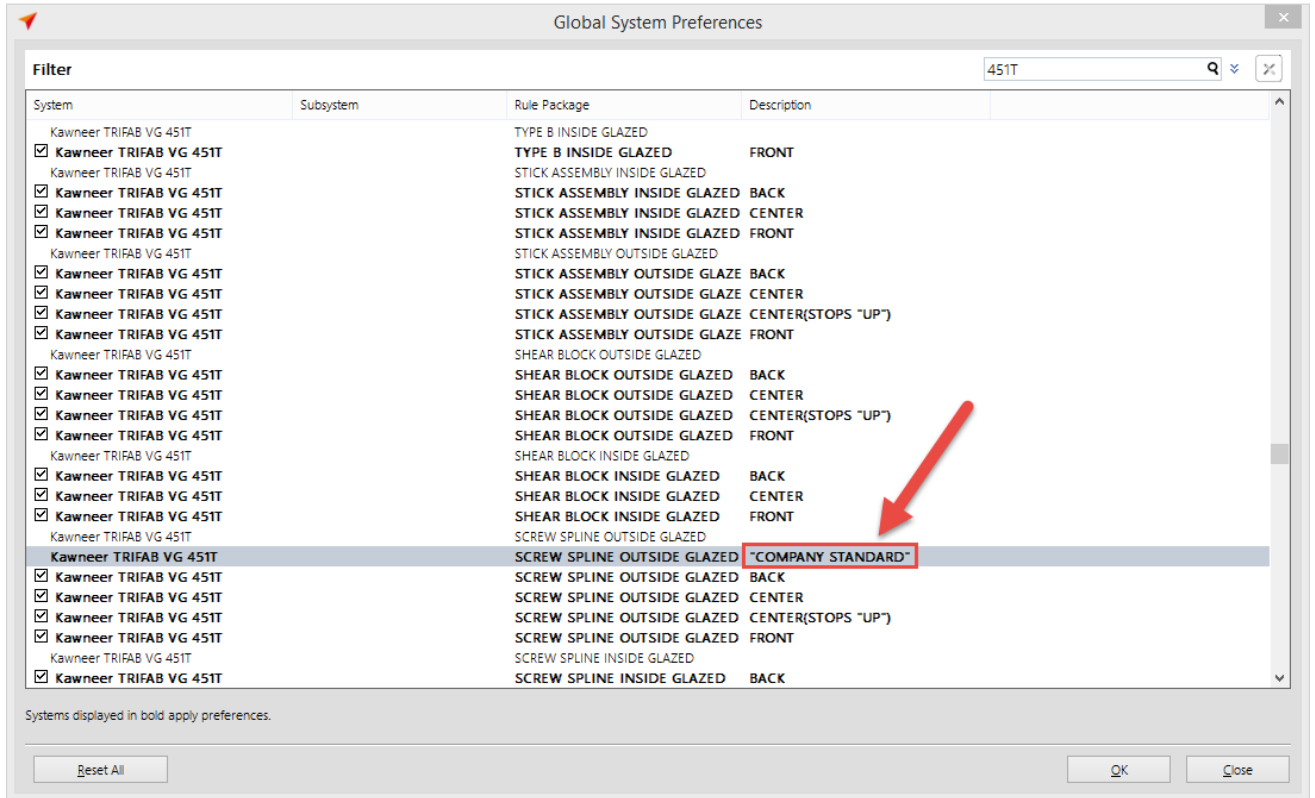
- 2.) In the upper right corner of the menu, you have the ability to search for the specific system in which you would like to make modifications. Once the desired system is located, right click on the Rule Package and Description and select “Copy.” (This will then take the standards that Logikal is programmed with and allow the user to make the changes only where needed.)



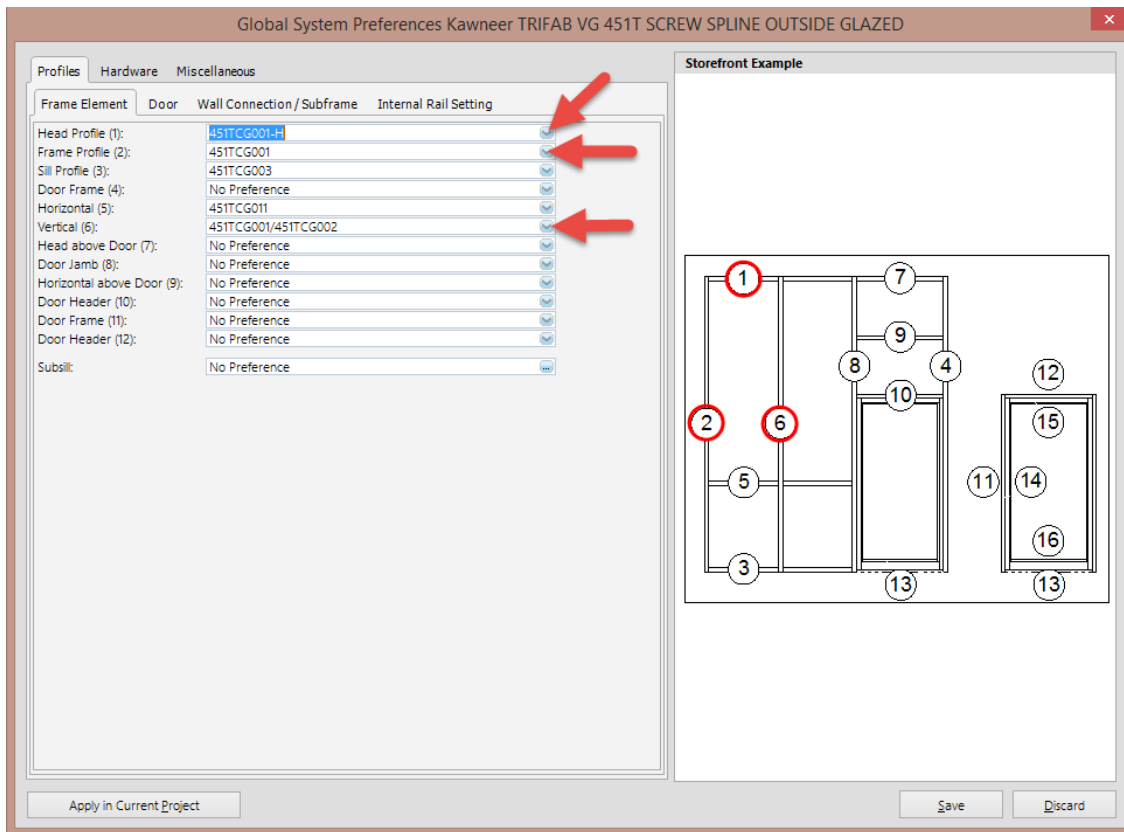
- 3.) You will then be prompted to add a description to the new “System Preference.”



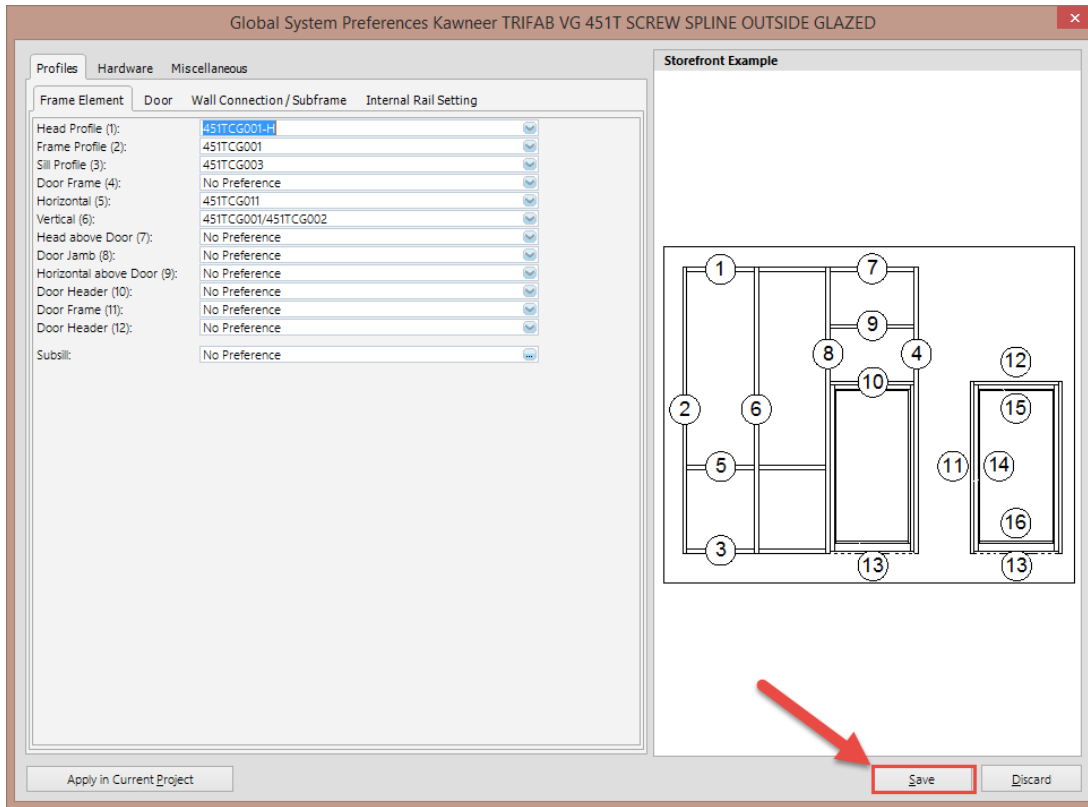
- 4.) The new System Preference Description will be added to the list, and will be available to modify. Double click on the newly created system.



5.) Here, the user is given the ability to change the standard profiles at the desired location by simply changing the assigned part numbers in the designated location. For example change position 1, 2, and 6 to automatically apply a standard head member at all locations to help increase optimization. Also, please note other available tabs to make further automatic assignments.



6.) After all modifications are made, please click “Save” in the lower right corner.



- 7.) Proceed to the desired Project, and standard Elevation input in the Project Center. Select “Create New Elevation,” and apply the desired System, and Rule package from the drop down menus. You will now see the “Description” that was created, and by selecting this preference, Logikal will automatically assign all preferences that were specified.

**Create New Elevation**

Elevation Number: 019

Brief Description:

Model Description:

Quantity: 1  Alternative

Phase: <None>

Status: Estimation

**Structural Analysis:**  Check Statics **Settings**

Installation Height: 0,0 ft (Upper Edge)

Location at Building:  On shorter side of building  On longer side of building

Distance to Building Corner: 0,0 ft (From Left in Exterior View)

**Profile System**

System: Kawneer TRIFAB VG 451T

Subsystem:

Rule Package: SCREW SPLINE OUTSIDE GLAZED

System Preference: COMPANY STANDARD

COMPANY STANDARD

BACK

CENTER

CENTER(STOPS "UP")

FRONT

OK Cancel

\*\*\* For personal assistance regarding preferences, settings, or anything else regarding Logikal software, feel free to contact our Technical Support staff **7 am – 5 pm MST, Monday – Friday.**

**- (800) 746-0641 -**

